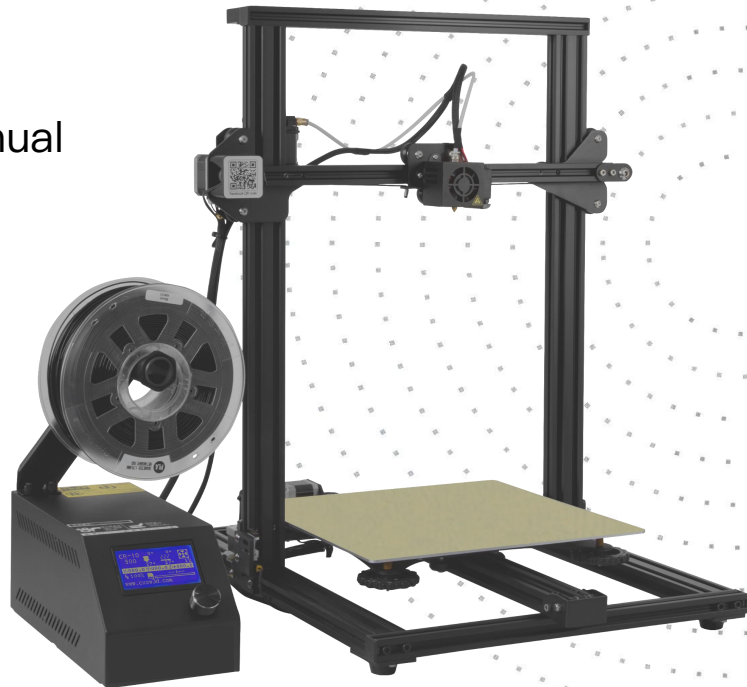


CREALITY

CR-10 Series 3D Printer User Manual

- The User Manual is for the CR-10 Series of 3D printers. It is also applicable for the CR-10S/CR-10 S4/CR-10 S5.
- But CR-10 mini without T-Bracket (Right) & Decoration Strip.
- Due to the different types of devices, hardware and software upgrade, it is normal if the devices have little different. Please be subject to the actual products.
- Detailed instructions for using are available on the TF card.



Parameters

| Basic Parameters | | | | | |
|--------------------|---|---------------|---------------|---------------|---------------|
| Model | CR-10 | CR-10S | CR-10 S4 | CR-10 S5 | CR-10mini |
| Printing Size | 300*300*400mm | 300*300*400mm | 400*400*400mm | 500*500*500mm | 300*220*300mm |
| Molding Tech. | FDM | | | | |
| Nozzle Number | 1 | | | | |
| Slice Thickness | 0.1mm-0.4mm | | | | |
| Nozzle Diameter | Standard 0.4mm | | | | |
| Precision | ±0.1mm | | | | |
| Filament | 1.75mm PLA | | | | |
| File Format | STL/OBJ/AMF | | | | |
| Working Mode | Online or TF card offline | | | | |
| Slice Software | Creality Slicer/Cura/Repetier-Host/Simplify3D | | | | |
| Power Supply | Input:AC 115V/230V 50/60Hz Output:DC 12V | | | | |
| Total Power | 270W | 270W | 250W | 270W | 270W |
| Bed Temp. | ≤100°C | ≤100°C | ≤60°C | ≤60°C | ≤100°C |
| Nozzle Temp. | ≤250°C | | | | |
| Resume Print | NO | Yes | Yes | Yes | Yes |
| Filament Detector | NO | Yes | Yes | Yes | NO |
| Dual Z-Axis | NO | Yes | Yes | Yes | NO |
| language Selection | NO | EN/CN | | | |
| Operating System | Windows XP/Vista//7/8/10 MAC/Linux | | | | |
| Printing Speed | ≤180mm/s, Normal 30-60mm/s | | | | |

CONTENTS

Dear Customers:

Thank you for choosing our products. For the best experience, please read the instructions before operating the Printer. Our 3D team will always be ready to give you the best service. Please contact us via the phone number or e-mail address provided at the end when you encounter any problem with the Printer.

For a better experience in using our product, you may learn how to use the Printer in the following ways:

Learning from the instructions and videos that come with your TF card.

Visit our official website at www.creality3d.cn You will find some related software or hardware information, contact details, operation and maintenance instructions on the website.

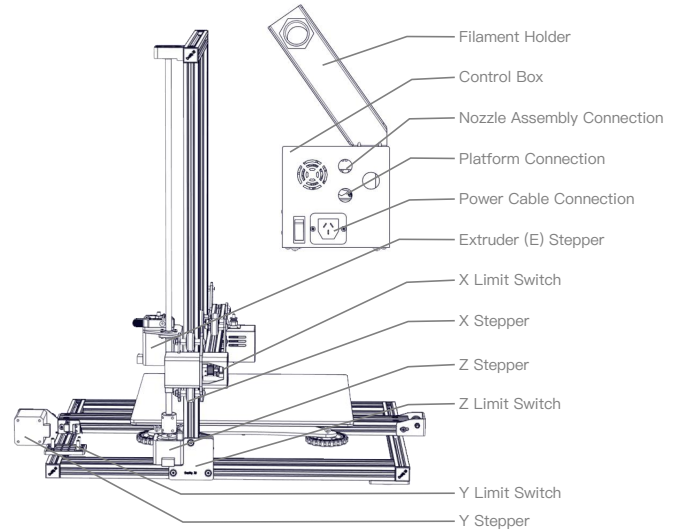
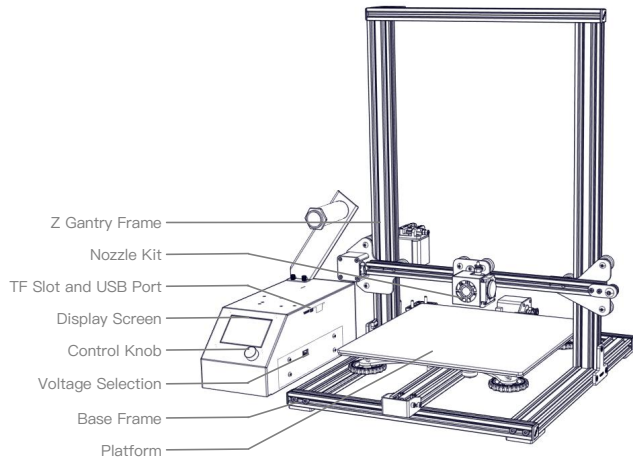
| | |
|-----------------------------|---|
| Introduction..... | 1 |
| General List..... | 2 |
| Device Installation..... | 3 |
| Cable Connection..... | 4 |
| Screen Information..... | 5 |
| Loading Filament..... | 6 |
| Platform Adjustment..... | 7 |
| Software Installation..... | 8 |
| For the First Printing..... | 9 |

NOTES

1. Do not use the printer in other wrong ways to avoid personal injury or property damage.
2. Do not place the printer near any heat source or flammable or explosive objects. We suggest placing it in a well-ventilated, low-dust environment.
3. Do not expose the printer to violent vibration or any unstable environment, as this may cause poor print quality.
4. Before using experimental or exotic filaments, we suggest using standard filaments such as ABS or PLA to calibrate and test the machine.
5. Do not use any other power cable except the one supplied. Always use the three-pin plug .
6. Do not touch the nozzle or printing surface during operation as they may be hot. Keep hands away from machine while in use to avoid burns or personal injury.
7. Do not wear gloves or loose clothing when operating the printer. Such cloths may become tangled in the printers moving parts leading to burns, personal injury, or printer damage.
8. When cleaning debris from the printer hotend, always use the provided tools. Do not touch the nozzle directly when heated. This can cause personal injury.
9. Clean the printer frequently. Always turn the power off when cleaning, and wipe with a dry cloth to clean dust, adhered printing plastics or any other material from the frame, guide rails, or wheels . Use glass cleaner or isopropyl alcohol to clean the print surface before every print for consistent results.
10. Children under the age of 10, should not use the printer without any supervision.

01/

Introduction

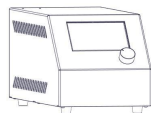


02/

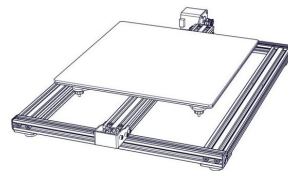
General List



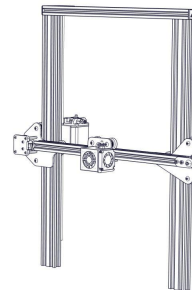
Tool Box



Control Box



Base Frame



Gantry Frame

◆ Tool list

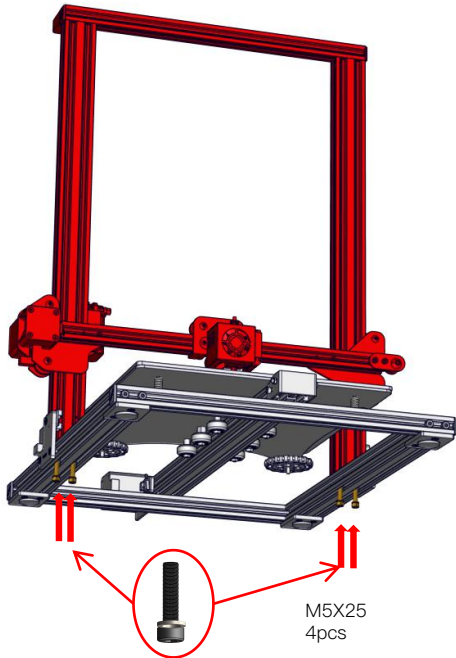
| No. | Image | Name | Qty | No. | Image | Name | Qty | No. | Image | Name | Qty |
|-----|-------|-----------------------------------|--------|-----|-------|--------------------------|-----|-----|-------|--------------------------------|------|
| 1 | | Spool & Nuts | 1set | 7 | | Power Cable | 1 | 13 | | Scraper | 1 |
| 2 | | Spool Holder | 1 | 8 | | USB Cable | 1 | 14 | | Cable Ties | 1set |
| 3 | | TF Card & Card Reader | 1set | 9 | | PTFE Tubing (spare part) | 1 | 15 | | Hex keys, Wrench & Screwdriver | 1set |
| 4 | | T-Bracket (Right) | 1 | 10 | | Nozzle Cleaner | 1 | 16 | | Spare Parts | 1set |
| 5 | | T-Bracket & Z Limit Switch (Left) | 1 | 11 | | Filament (200g) | 1 | 17 | | Decorative Strip | 1 |
| 6 | | M5X25 Bolt & Lock Washer | 4 sets | 12 | | Diagonal Pliers | 1 | 18 | | Thumb Screw | 3 |

*CR-10 mini without T-Bracket (Right) & Decoration Strip.

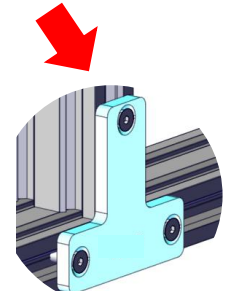
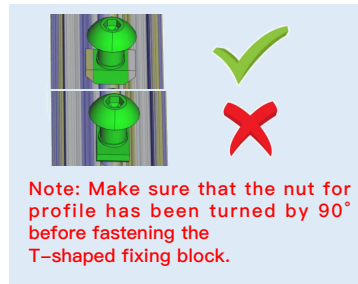
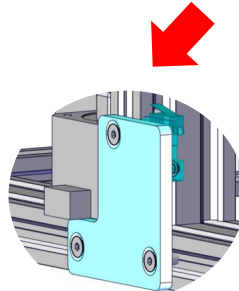
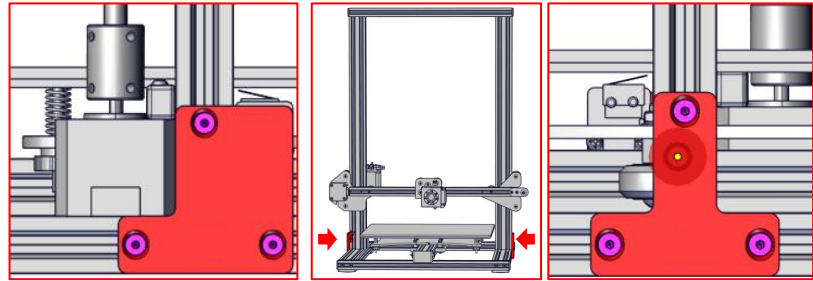
03/

Device Installation

◆ Install the Gantry Frame

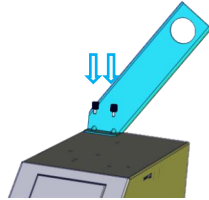
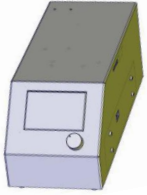


◆ Install the T-Shaped Fixing Block.

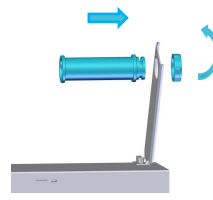


*CR-10 mini without T-Bracket (right).

◆ Install the Rack



Attach the Bracket with two thumb screws.



Attach Spool Holder with included Nuts



Finished

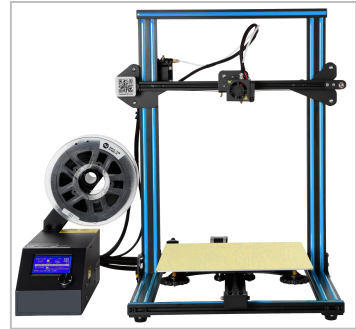
◆ Installation decoration strip



Installation decoration strip into the notch, starting from one end.



Cut off the excess material with the diagonal pliers



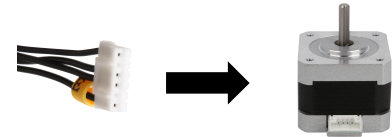
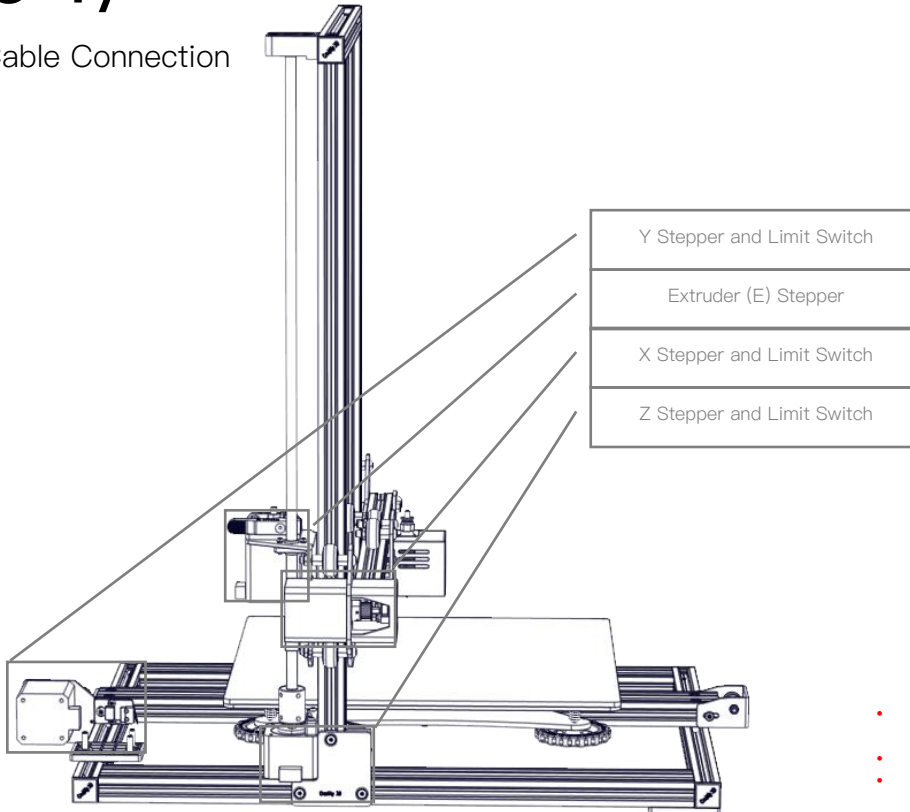
Attach the Decoration strip to all parts needing to be decorated.

*The decoration strip is available in various colors. The pictures above are for reference only.

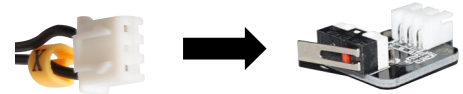
*CR-10mini without Decoration Strip.

04/

Cable Connection



Connect the Stepper Motors according to the yellow labels on the 6pin (4-wire) side.



Connect the Limit Switches according to the yellow labels on the 3pin (2-wire) side.



Connect the aviation connectors to the ports

- Select the correct input voltage to match your local mains (230V or 115V)
- Damage can occur if voltage is set incorrectly.
- Make sure the power cable is connected.

05/

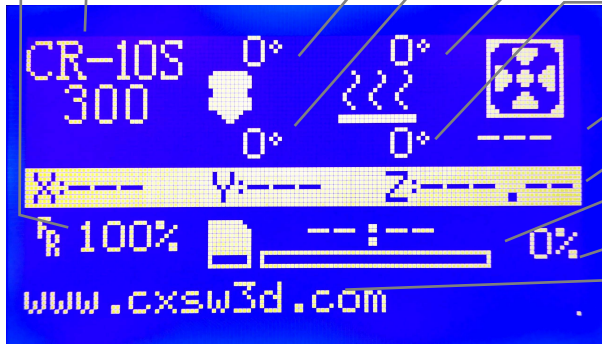
Screen Information



Push: OK/Enter Sub Menu
Turn: Change Option/Value

Print Speed

Device Model



- Set Temperature of the Nozzle
- Current Temperature of the Nozzle
- Set Temperature of the Hot Bed
- Current Temperature of the Hot Bed
- Part Cooling Fan Speed
- Current Location of the nozzle
- Print Time
- Print Progress
- Prompt Message

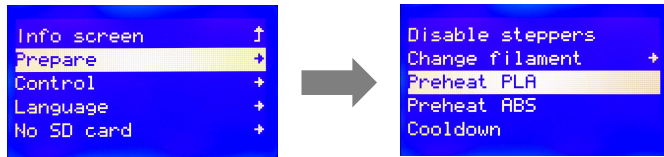
| Screen Information | | |
|------------------------------|--|---|
| Menu | Sub Menu | Explanation |
| Info Screen ↑ | Main ↑ | Return |
| Prepare → | Auto Home | Return to Zero |
| | Move Axis → | Moving X Y Z axis or Extruder by inputting |
| | Bed Auto Leveling | |
| | Disable Steppers | Close motor and move X Y Z axis by hands |
| | Change Filament | |
| | Preheat PLA | |
| | Preheat ABS | |
| Control → | Cooldown | Close and cooldown the nozzle |
| | Temperature → | Heat the nozzle and bed or change fan speed by inputting number |
| | Restore Failsafe | Restore factory setting |
| Language | English/Chinese | |
| No SD card/Print from TF | Select the printing model | |
| Init. SD Card/Change SD Card | | |
| Printing | | |
| Tune → | Speed | Change Printing Speed by inputting |
| | Nozzle | Change the temperature by inputting |
| | Bed | Change the temperature by inputting |
| | Fan Speed | Change Fan Speed by inputting |
| | Flow | Change filament flow by inputting number |
| Pause Print | Can choose to continue printing | |
| Stop Print | Reprint or choose another model to print | |

06/

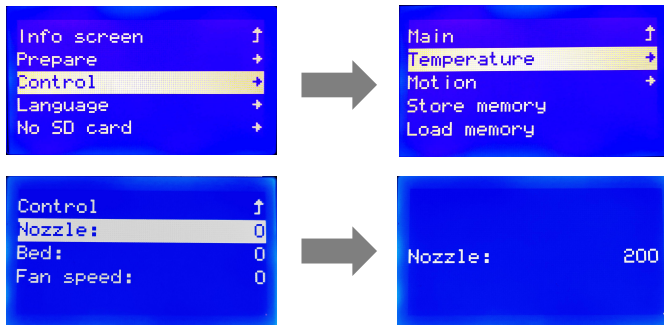
Loading Filament

1、Preheat

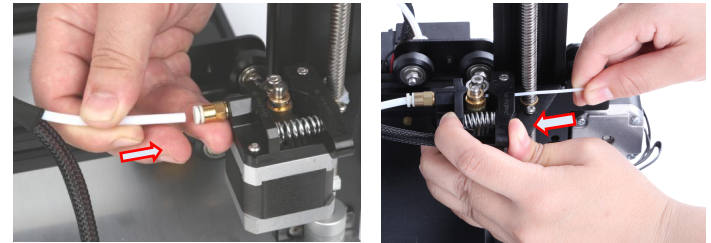
Method 1



Method 2



2、Feed Filament



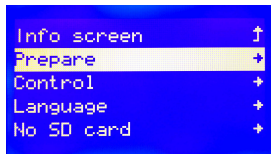
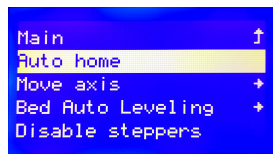
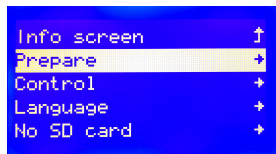
Press and hold the extruder lever then insert the 1.75mm filament through the small hole of the extruder. Continue feeding until you see filament come out of the nozzle.

Tip: How to Replace the Filament?

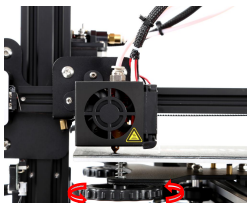
- 1、Cutting filament near the Extruder and slowly feed new filament until the new filament get into the PTFE tube
- 2、Preheating the nozzle, Press and hold the extruder, extract the filament, then feed the new filament.

07/

Bed Leveling



1. Prepare →Auto Home. Waiting for the nozzle to move to the left/front of the platform.→ Prepare→Disable Steppers(Close stepper drive, release motor)



2. Move the nozzle to the front/left leveling screw and adjust the platform height by turning the knob underneath. Use a piece of A4 paper (standard printer paper) to assist with the adjustment, making sure that the nozzle lightly scratches the paper.
3. Complete the adjustment of the screws on all 4 corners.
4. Repeat above steps 1–2 times if necessary.

| | | |
|--|--|--|
| | | The nozzle is too far away from the platform, so the filament can not adhere to the platform. |
| | | Filament are extruded evenly, just sticking on the platform. |
| | | The nozzle is too close to the platform, and the filament are not extruded enough, even scraping the platform. |

08/

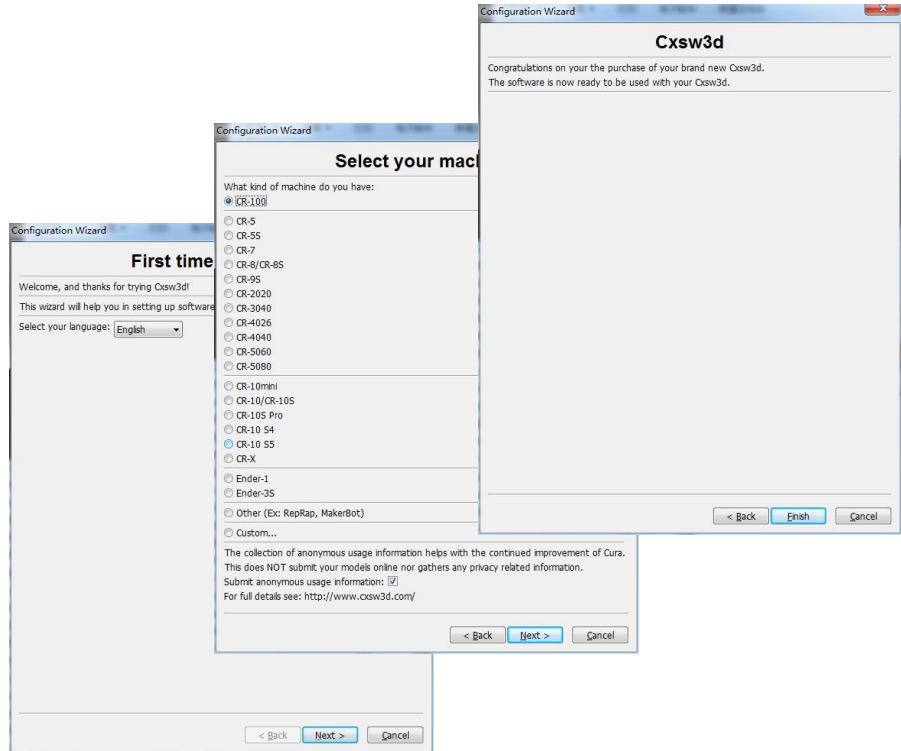
Software Installation



1. Double click to install the software.



2. Double click to open the software.

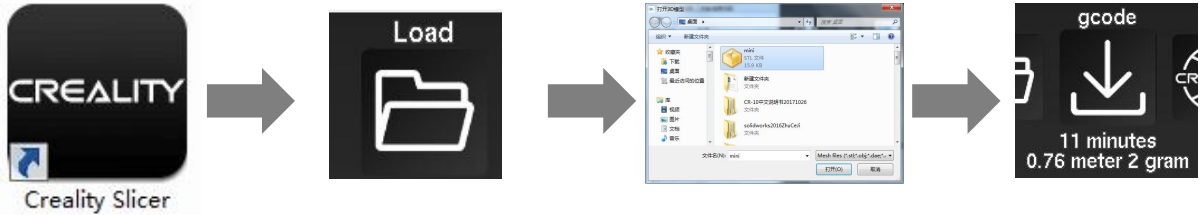


3. Select language→Next→Select your machine→Next→Finish.

09/

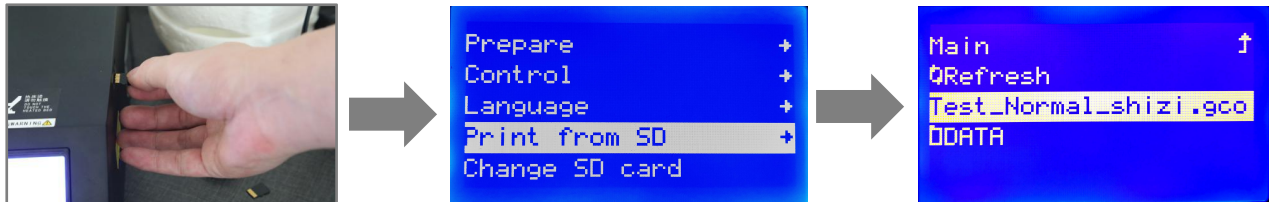
First Printing

1.Slicing



Open the software→Load→Select the file→Wait for slicing to finish ,and save the gcode file to TF card.

2.Printing



Insert the TF card→ Print → Select the file to be printed.

After– Sales Service

Service

1.The printer can be returned within seven days, 15 days replacement, one year warranty, lifetime maintenance.

Replacement requirement

1. The appearance of the product is intact, without damage, scratches, smudges, cracks, deformation, etc.;
2. Machine parts, tools and others are complete;
3. Provide a complete and valid purchase invoice and warranty, product number should be the same.

Warranty coverage

1. The following accessories are not included in the warranty coverage if they are not damaged by transportation: platform sticker; platform forming plate; acrylic cover; card reader and TF card; platform glass; USB cable; filament; rack and tools,etc.
2. Profile: Before we deliver the goods, we will do the machine test, so maybe there will be light scratch, or due to long–distance transportation, which scratch the profile a little bit. in the premise of not affecting the normal use, in principle, not within the scope of warranty;
3. Nozzle assembly (nozzle, heating block, throat pipe,heat sink, Teflon tube, etc.) warranty period is 3 months, if it is damage after the warranty expires, you need to purchase another one;
4. Motherboard, LCD display, power supply, hot bed,warranty period is 12 months, if there are quality problems, you can get free maintenance; over the warranty period, can be sent back to the original factory maintenance, the users need to bear the return shipping and maintenance costs;
5. Not included in warranty coverage:
 - (1) It is not possible to provide an effective after–sales service card or serial number;
 - (2) The whole machine and components exceed the warranty period;

- (3) Equipment failure or damage caused by unauthorized modification of the equipment (private modification includes: 1. modification of the nozzle assembly; 2. modification of the machine structure; 3. use of third–party components; 4. use of third–party firmware procedures or change the original Factory firmware program, etc.);
- (4) Equipment failure or damage due to incorrect installation and use;
- (5) Equipment failure or damage caused by the use of the equipment in a working environment not specified by the product;
- (6) Equipment failure or damage due improper use (beyond workload, etc.) or maintenance (moisture, etc.);
- (7) Equipment failure or damage due to the use of other branded components or low quality consumables.



Facebook QR code



Website QR code

SHENZHEN CREALITY 3D TECHNOLOGY CO., LTD.

12/F, Block 3, JinChengYuan, Huafan Road, Tongsheng Community, Dalang,
Longhua District, Shenzhen, China, 518109

Official Website: www.creality3d.cn

Tel: +86 755-2105 9455

E-mail: info@creality3d.cn cs@creality3d.cn

